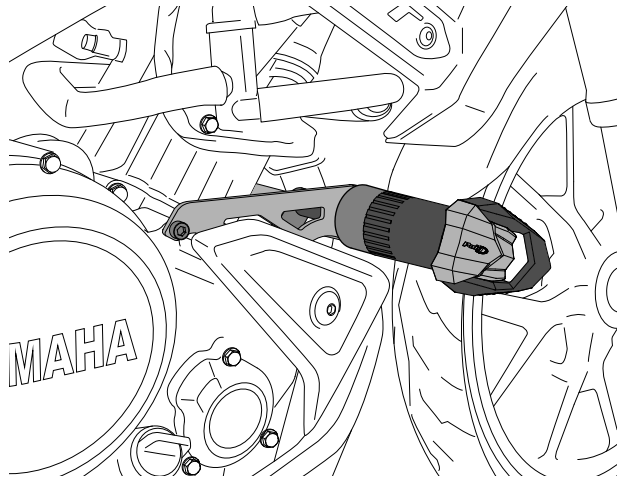


YAMAHA MT125 '20

REF 3885N

PROTECTOR MOTOR R19 / R19 CRASH PAD / R19 STURZPADS



CONSULTAR EN NUESTRA PAGINA WEB LA DISPONIBILIDAD DEL VIDEO DE MONTAJE DE ESTA REFERENCIA.
CONSULT OUR WEBSITE THE VIDEO MOUNT AVAILABILITY OF THIS REFERENCE.

ID.	DESCRIPCIÓN	DESCRIPTION	QTY.	REF.:
1	Tapas	Covers	2	TAPAPROTECR19-D/I
2	Tornillo M10/150X20 DIN912	M10/150X20 DIN912 screw	2	M2TM10150020A9B
3	Arandela M10 DIN125/A	M10 DIN125/A nut	4	M2AM10DIN125AZB
4	Protector Nylon	Nylon Protector	2	PROTECNLR19-145
5	Casquillo aluminio derecho	Right aluminium spacer	1	CASQU332-0-1632
6	Casquillo aluminio izquierdo	Left aluminium spacer	1	CASQU475-0-1775
7	Pletina 4mm lado derecho	Right side platen 4mm	1	PLATI380-0-0380
8	Pletina 4mm lado izquierdo	Left side platen 4mm	1	PLATI381-0-0381
9	Casquillo aluminio derecho	Right aluminium spacer	1	CASQU335-0-1635
10	Casquillo aluminio izquierdo	Left aluminium spacer	1	CASQU475-0-1775
11	Pletina 6mm lado derecho	Right side platen 6mm	2	PLATI379-0-0379
12	Casquillo aluminio Ø15x80	Ø15x80 aluminium spacer	1	CASQU476-0-1776
13	Varilla Ø10x375	Ø10x375 var	1	VARILLO4-1-1379
14	Tornillo M6x55 DIN912	M6x55 DIN912 screw	2	TORNI-AD912-453
15	Tornillo M6x45 DIN912	M6x45 DIN912 screw	2	TORNI-D912--449
16	Tornillo M10/150x110 DIN912	M10/150x110 DIN912 screw	1	M2TM10150110A9B
17	Tuerca M10 DIN 6923	M10 DIN 6923 nut	1	TUERCAD6923M10Z

YAMAHA MT125 '20

REF
3885N

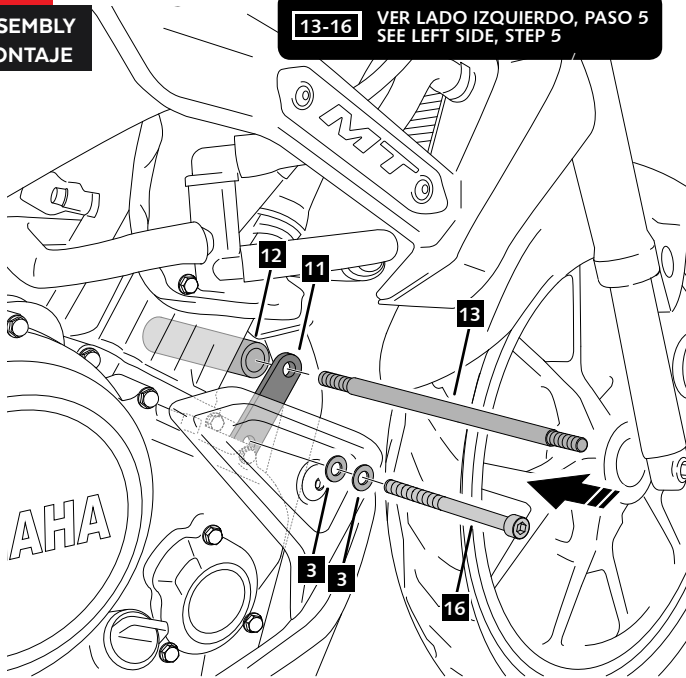
INSTRUCCIONES DE MONTAJE - MOUNTING INSTRUCTIONS - MONTAGEANLEITUNG

1

LADO DERECHO - RIGHT SIDE - RECHTE SEITE

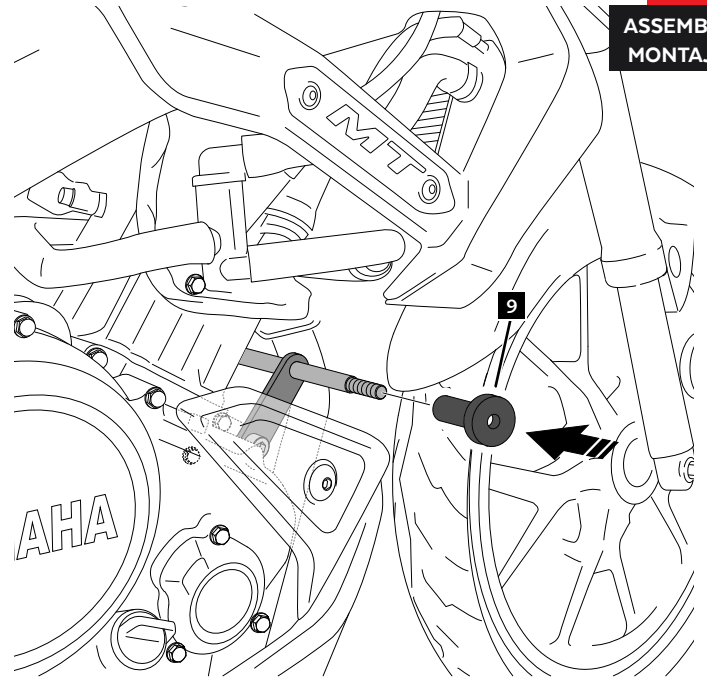
ASSEMBLY
MONTAJE

13-16 VER LADO IZQUIERDO, PASO 5
SEE LEFT SIDE, STEP 5



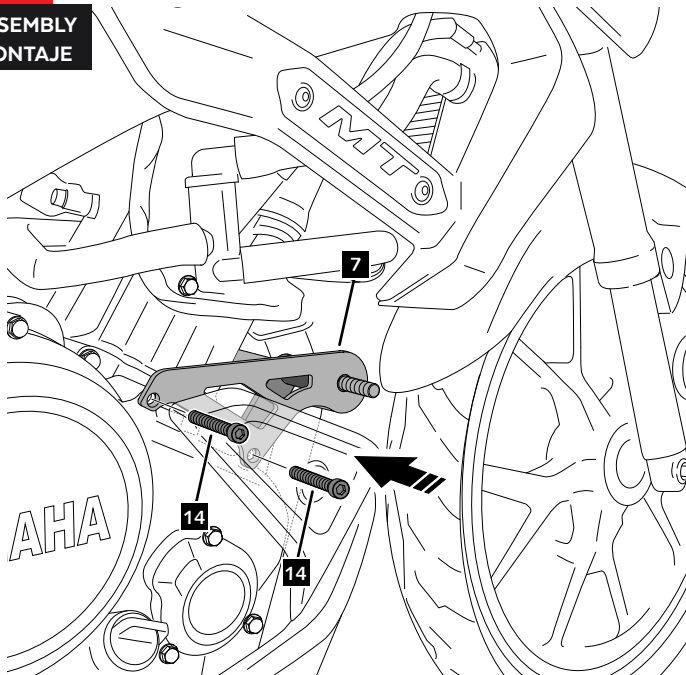
2

ASSEMBLY
MONTAJE



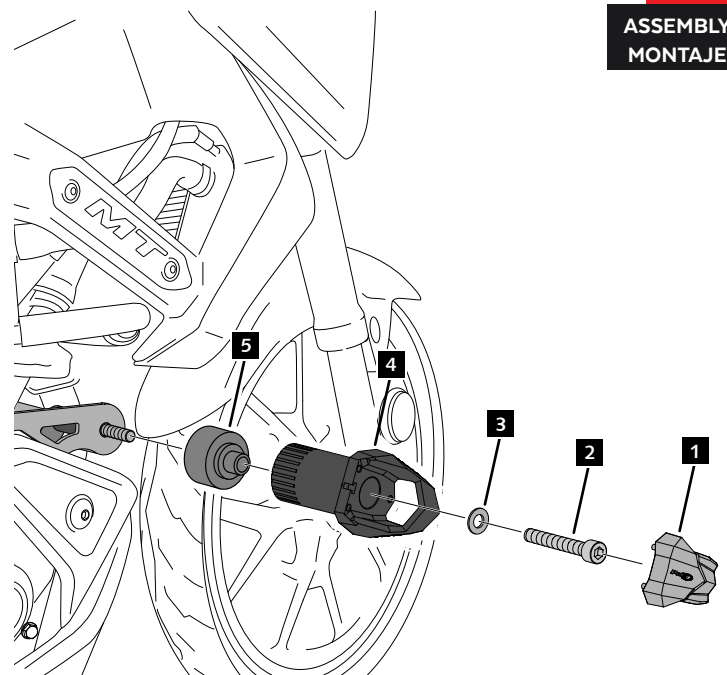
3

ASSEMBLY
MONTAJE



4

ASSEMBLY
MONTAJE



YAMAHA MT125 '20

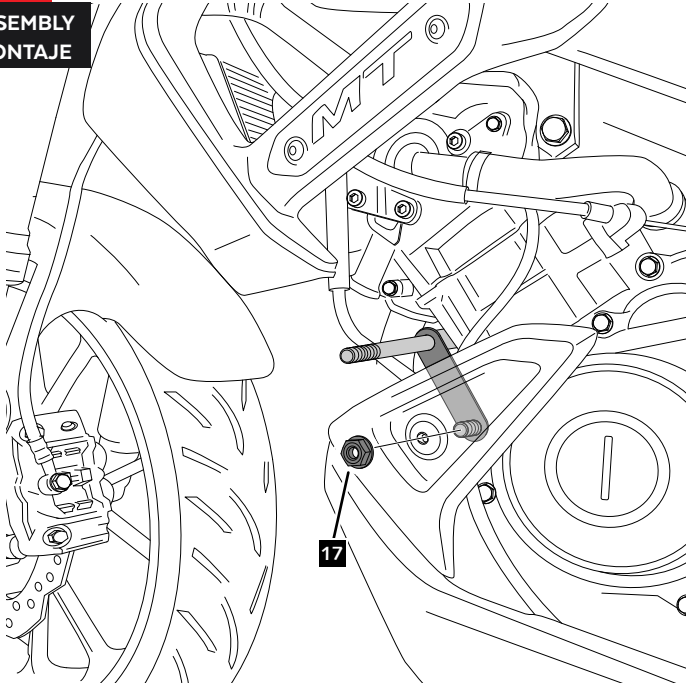
REF
3885N

INSTRUCCIONES DE MONTAJE - MOUNTING INSTRUCTIONS - MONTAGEANLEITUNG

5

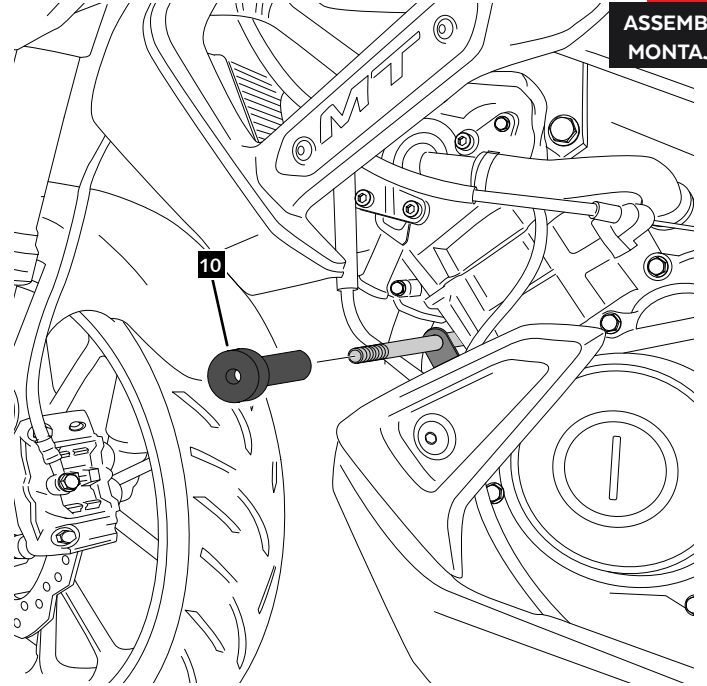
LADO IZQUIERDO - LEFT SIDE - LINKE SEITE

ASSEMBLY
MONTAJE



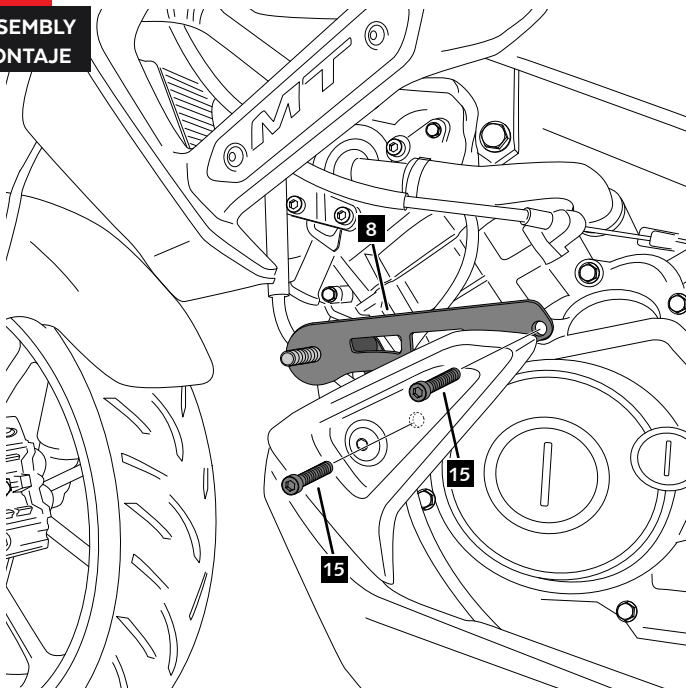
6

ASSEMBLY
MONTAJE



7

ASSEMBLY
MONTAJE



8

ASSEMBLY
MONTAJE

