

UNIVERSAL

M O U N T I N G I N S T R U C T I O N S

REF 21931

HALCYON WINDSHIELD MODEL - CARENABRÍS HALCYON



ID	PIEZA/PART	DESCRIPCIÓN	DESCRIPTION	QTY	REF
1		Cúpula	Screen	1	21931H/WM3
2		Tapón de plástico	Plastic cap	2	TOPEE-VPGT--8/4
3		Tapa de plástico	Plastic cover	2	CONJU-S3PCC-003
4		Varilla Ø9x 200mm	Ø9x 200mm Bar	2	CJROTULA-0-P200
5		Brida rotula L	L ball joint bridle	2	BRIROTO1-1-PR16
6		Brida rotula R	R ball joint bridle	2	BRIROTO2-1-PR16
7		Tornillo Philips 5x10mm	Ø5x10mm Philips screw	4	TORNIP510---233
8		Tornillo M5x20 DIN9120	M5x20 DIN912 Allen screw	4	TORNI-AD912-464
9		Tuerca autoblocante M5 DIN982 INOX	M5 DIN982 self-locking nut	4	TUERCA-D982-746
10		Semi-bridá corta	Short semi-bridle	2	BRIDAANT-0-PR16
11		Semi-bridá larga	Large semi.-bridle	2	BRIDAPOS-0-PR16
12		Casquillo semi-bridá para aplicar al manillar de Ø26	Semi.-bridle arrowhead applicate the handlebar Ø26	2	CAS29-26-0-PR16
13		Casquillo semi-bridá para aplicar al manillar de Ø22	Semi.-bridle arrowhead applicate the handlebar Ø22	2	CAS29-22-0-PR16
14		Pasador cilíndrico Ø4x20mm	Ø4x20mm cross dowel pin	2	VARILI4X20--576
15		Bridá varilla	Dispstick bridle	2	FIXVARLL-0-PR16
16		Tornillo Allen M8x55 din912	M8x55 DIN912 Allen screw	2	TORNI-D912--631
17		Tuerca M8 autoblocante	M8 self-locking nut	2	TUEA-D985.8-M8-
18		Tapón tornillo M8 DIN912	M8 DIN912 screw cap	2	TAPA--CHC11450E

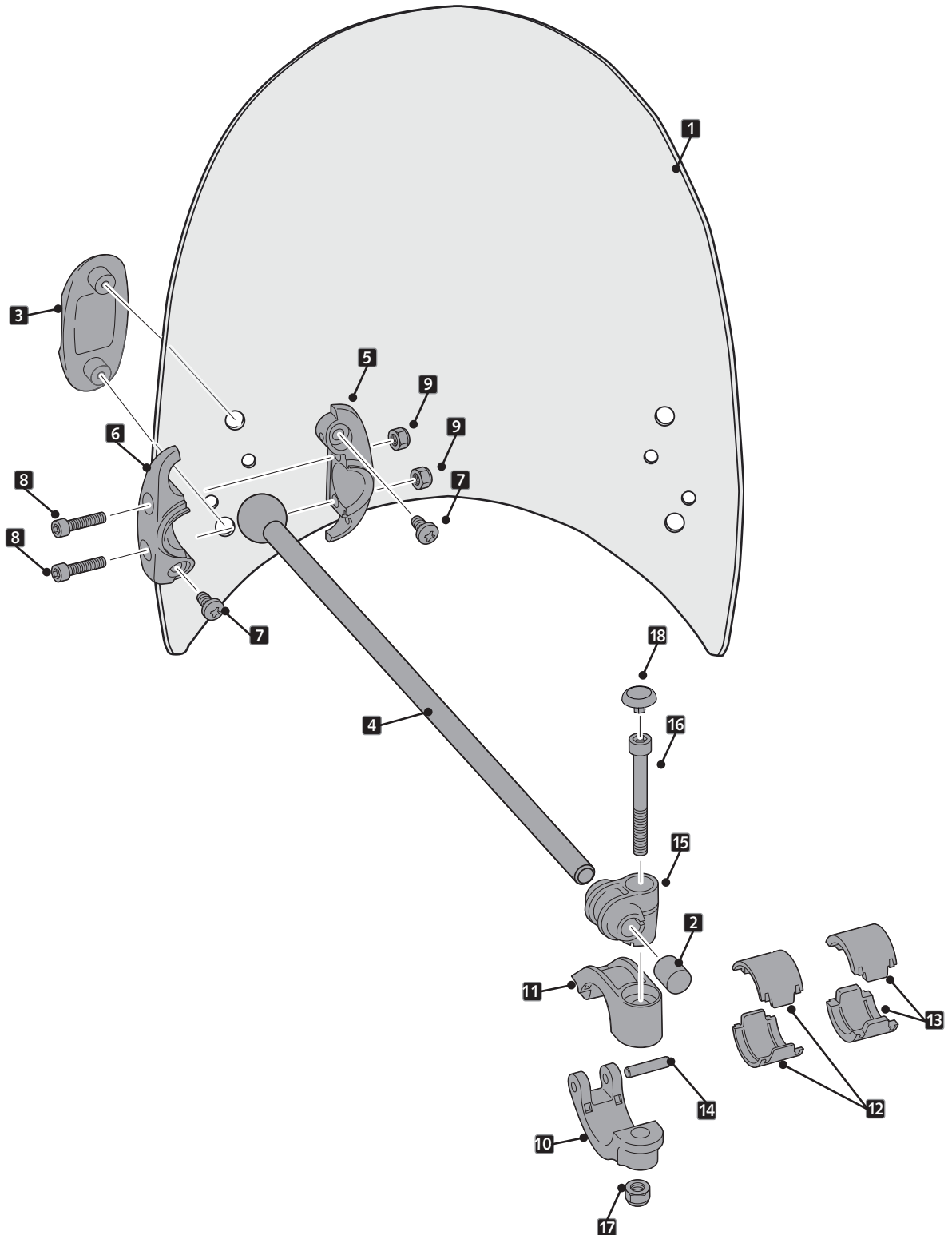
* Algunos de los Componentes se suministran montados
/ Some components are supplied assembled

UNIVERSAL

INSTRUCCIONES DE MONTAJE - MOUNTING INSTRUCTIONS - MONTAGEANLEITUNG

1

ASSEMBLY
MONTAJE

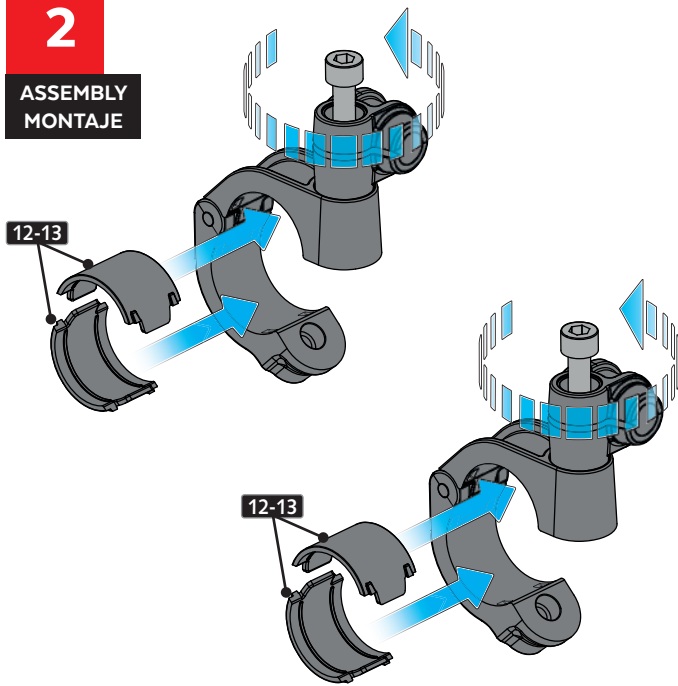


UNIVERSAL

INSTRUCCIONES DE MONTAJE - MOUNTING INSTRUCTIONS - MONTAGEANLEITUNG

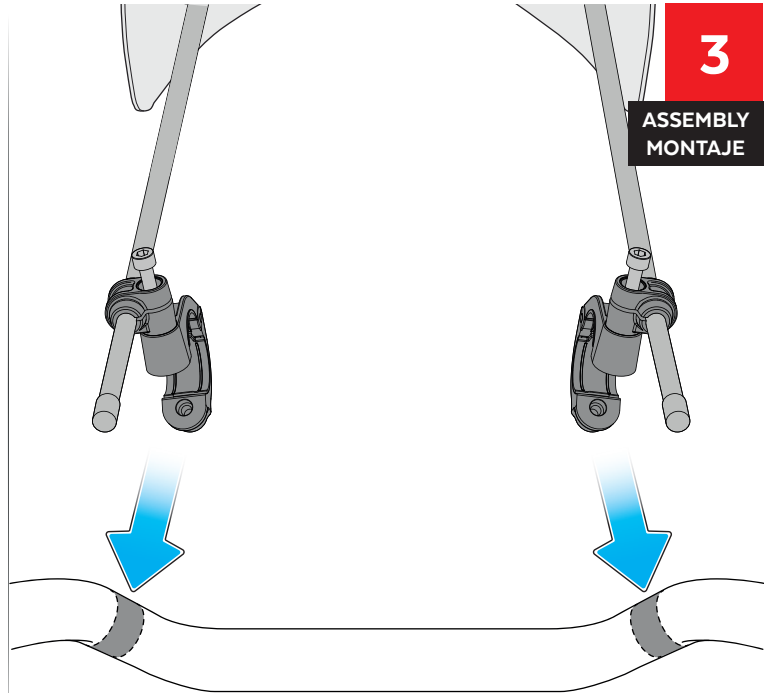
2

ASSEMBLY
MONTAJE



3

ASSEMBLY
MONTAJE



4

ASSEMBLY
MONTAJE

