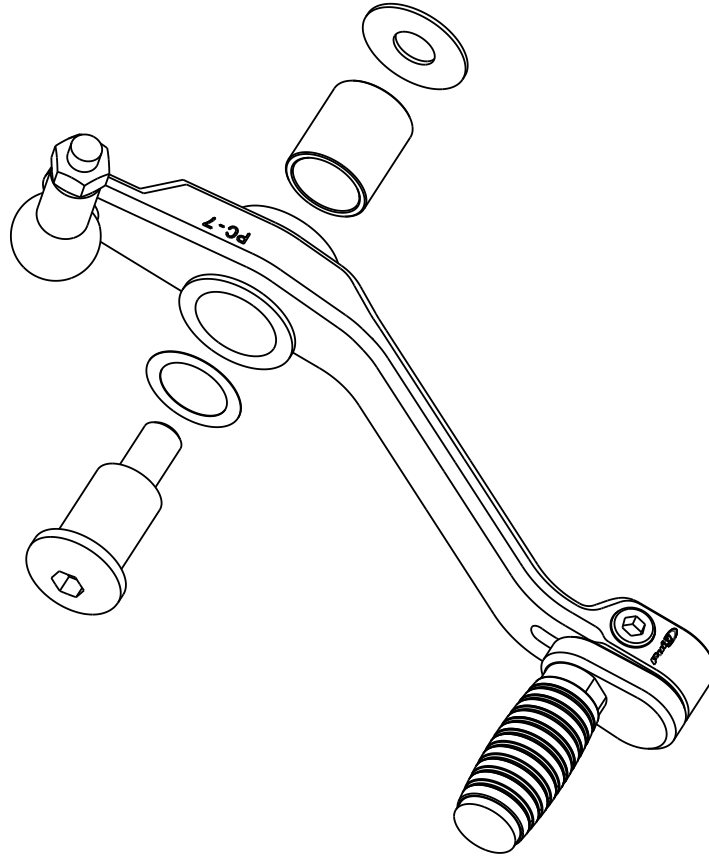


PALANCA DE CAMBIO - YAMAHA MT09 '24
SHIFT LEVER- YAMAHA MT09 '24

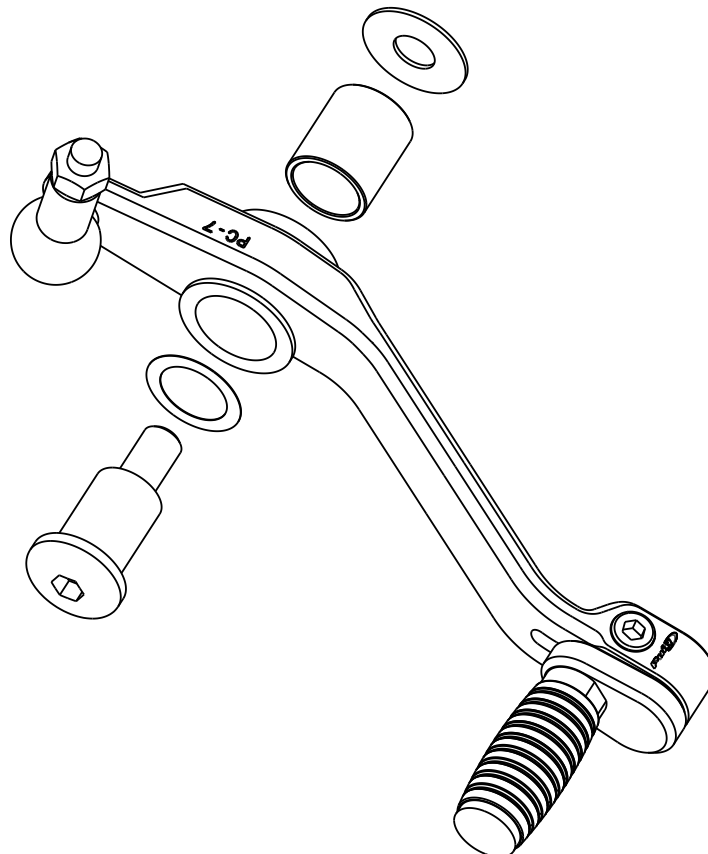
REF.22230
PALANCA DE CAMBIO
SHIFT LEVER



Se aconseja el uso de un fijador de
roscas medio.
The use of a medium threadlocker is
recommended.

PALANCA DE CAMBIO - YAMAHA MT09 '24
SHIFT LEVER- YAMAHA MT09 '24

REF.22230
PALANCA DE CAMBIO
SHIFT LEVER



Se aconseja el uso de un fijador de
roscas medio.
The use of a medium threadlocker is
recommended.