

# BMW R1250R '23-

## M O U N T I N G I N S T R U C T I O N S

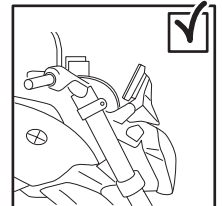
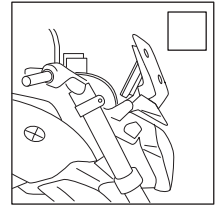
REF 22300

WINDSHIELD NEW GENERATION TOURING



TORX  
T25  
T40

ALLEN  
Nº 3  
Nº 6



ID	PIEZA/PART	DESCRIPCIÓN	DESCRIPTION	QTY	REF
1		Cúpula TOURING	TOURING Screen	1	10714W/H/FM3
2		Soporte derecho	Right support	1	SOPOR2P3-R22300
3		Soporte izquierdo (•)	Left support (•)	1	SOPOR2P3-L22300
4		Tornillo Allen M8x40 DIN912	M8x40 DIN912 Allen screw	2	TORNI-AD912-475
5		Casquillo Ø8,5x Ø14x 10	Ø8,5x Ø14x 10 Arrowhead	2	CASQUI-----576
6		Silentblock Ø9 xØ6 x8mm	Ø9 xØ6 x8mm silentblock	6	AROPASACABLES-3
7		Casquillo con valona Ø12x Ø6,8x7,3	Ø12x Ø6,8x7,3 Bush with flange	6	CASQUI-1A---750
8		Tornillo Allen M5x16 Ø11 ISO 7380	Allen screw M5x16 Ø11 ISO 7380	6	TORNI-I7380-493
9		Tapón tornillo M5 ISO 7380	M5 ISO 7380 screw cap	6	TAPON-----85

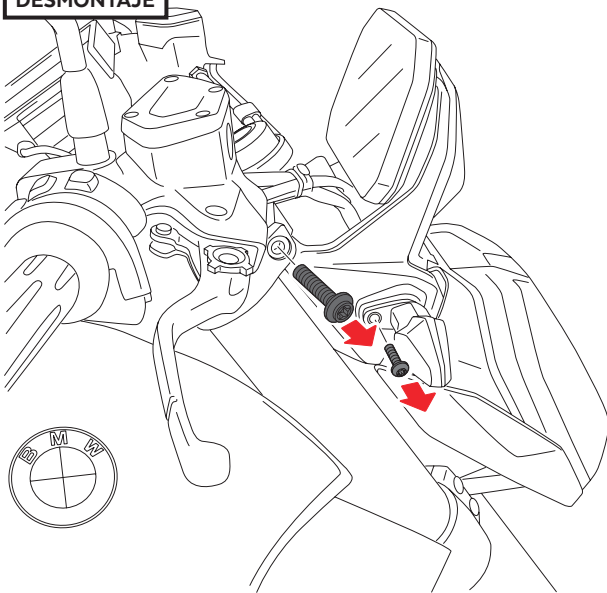
\* Algunos componentes se suministran montados.  
Some components are supplied assembled.

# BMW R1250R '23-

## INSTRUCCIONES DE MONTAJE - MOUNTING INSTRUCTIONS - MONTAGEANLEITUNG

**1**

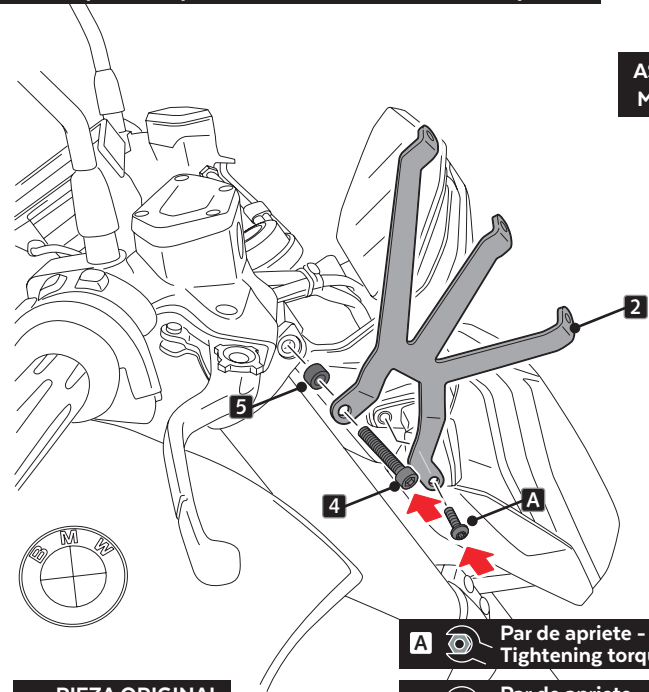
**DISASSEMBLY  
DESMONTAJE**



Se muestra el montaje del lado derecho a modo de ejemplo, realizar los mismos pasos para el montaje del lado izquierdo.  
The right side assembly is shown as an example, so the same steps can be performed for the left side assembly.

**2**

**ASSEMBLY  
MONTAJE**



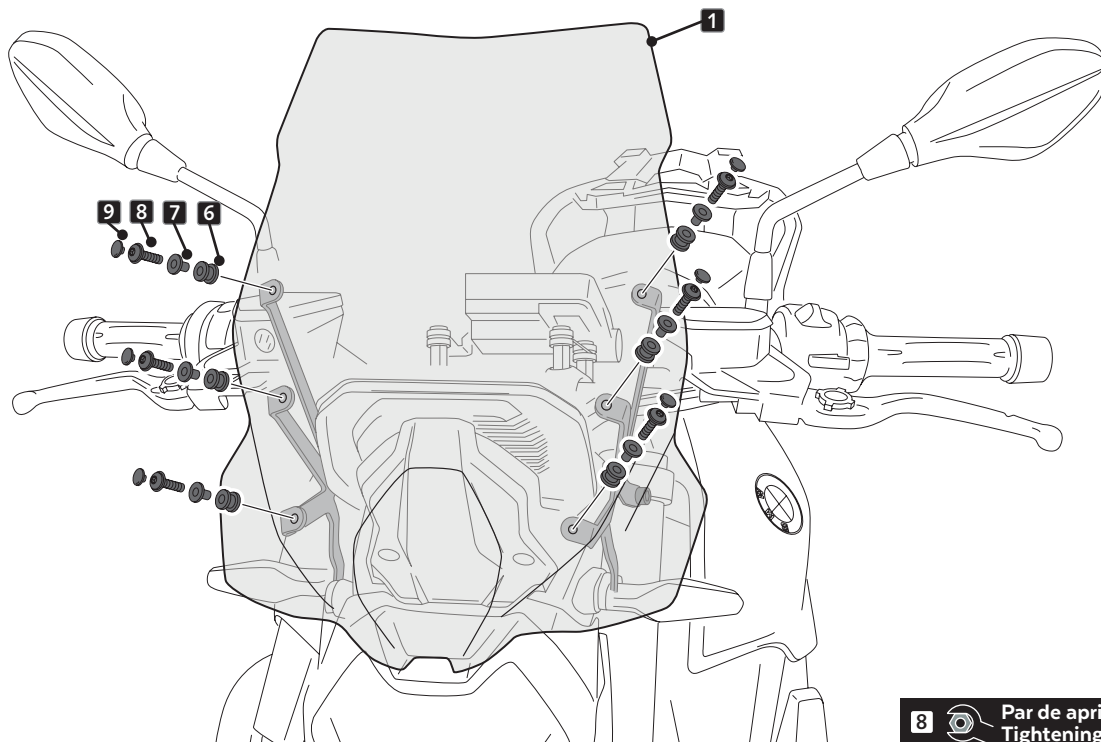
**A** PIEZA ORIGINAL  
ORIGINAL PART

**A** Par de apriete - 7 Nm  
Tightening torque - 7Nm

**4** Par de apriete - 19 Nm  
Tightening torque - 19 Nm

**3**

**ASSEMBLY  
MONTAJE**



**8** Par de apriete - 3 Nm  
Tightening torque - 3Nm