

# YAMAHA YZF R1 '15-

## M O U N T I N G I N S T R U C T I O N S

REF 20127N

TAPA ALTERNADOR / ALTERNATOR COVER



1 Person

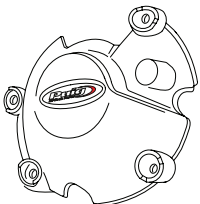
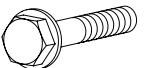


1 hour



EASY



ID.	PIEZA / PART	DESCRIPCIÓN	DESCRIPTION	QTY.	REF.:
1		Tapa alternador	Alternator cover	1	PT.Y06.1
2		Tornillo M6x35 DIN6921	DIN6921 M6x35 screw	4	-

**CONSULTAR EN NUESTRA PAGINA WEB LA DISPONIBILIDAD DEL VIDEO DE MONTAJE DE ESTA REFERENCIA.  
CONSULT OUR WEBSITE THE VIDEO MOUNT AVAILABILITY OF THIS REFERENCE.**



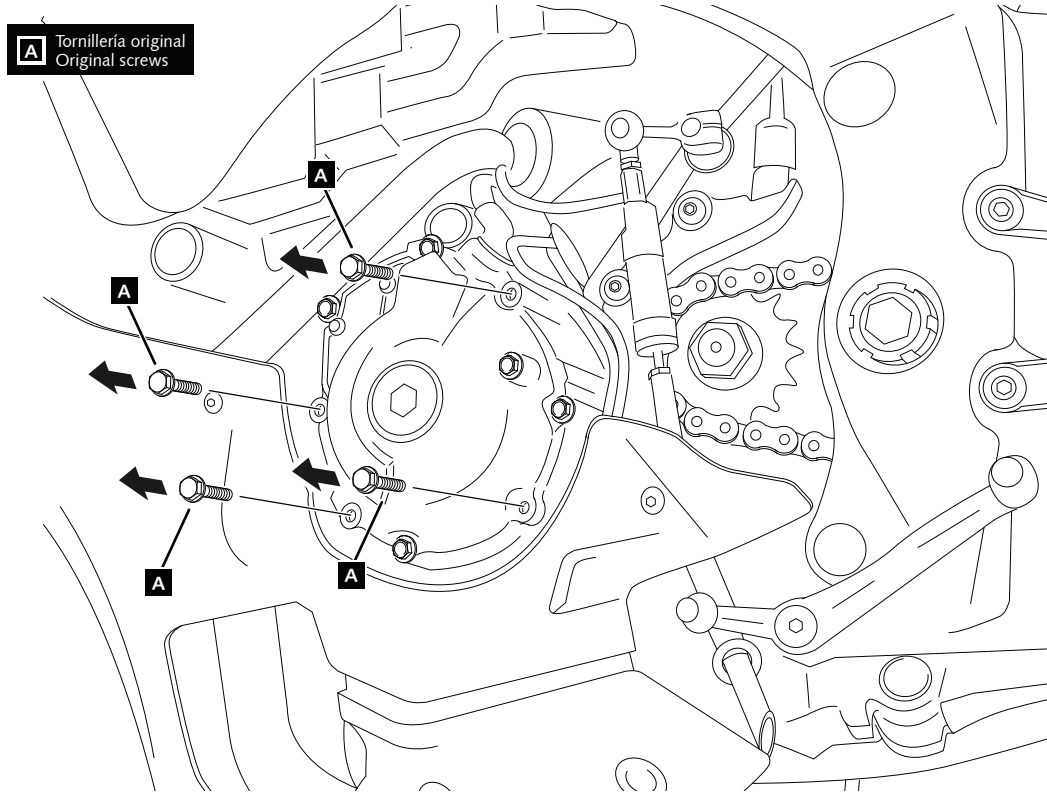
# YAMAHA YZF R1 '15-

REF 20127N

INSTRUCCIONES DE MONTAJE - MOUNTING INSTRUCTIONS - MONTAGEANLEITUNG

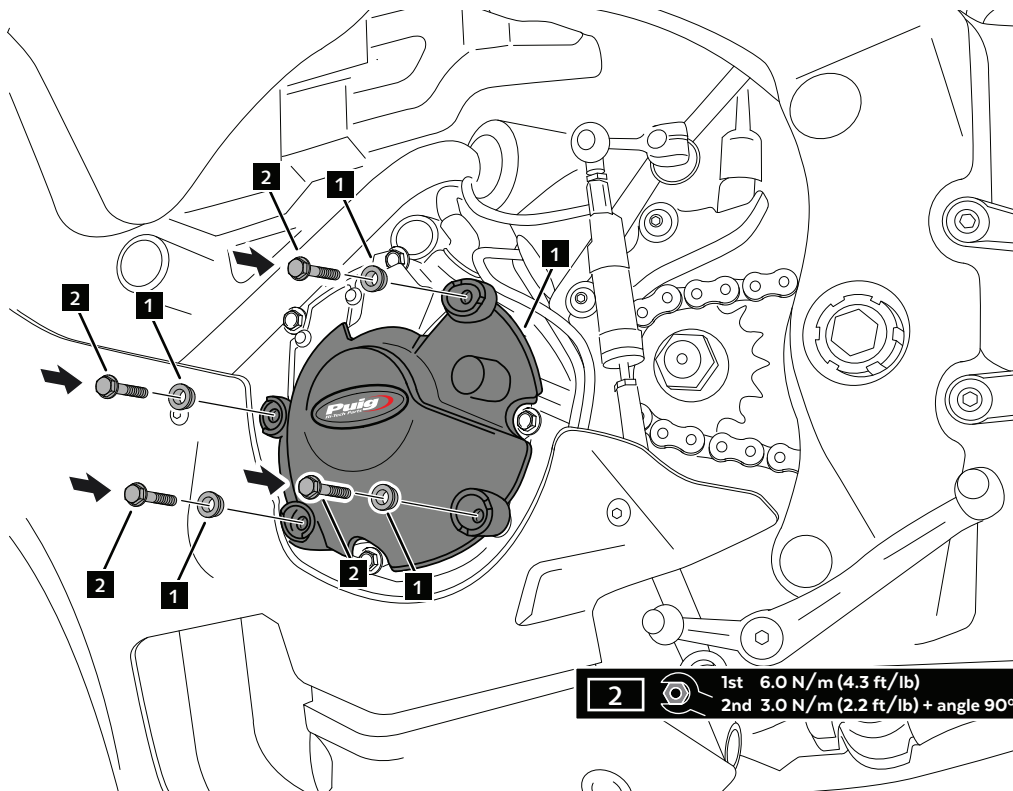
**1**

DISASSEMBLY  
DESMONTAJE



**2**

ASSEMBLY  
MONTAJE



# YAMAHA YZF R1 '15-

## M O U N T I N G I N S T R U C T I O N S

REF 20127N

TAPA EMGRAGUE / TAPA BOMBA AGUA  
CLUTCH COVER / WATER PUMP COVER



1 Person



1 hour



EASY



ID.	PIEZA / PART	DESCRIPCIÓN	DESCRIPTION	QTY.	REF.:
1		Tapa bomba de agua	Water pump cover	1	PT.Y06.3
2		Tapa embrague	Clutch cover	1	PT.Y06.2
3		Tornillo M6x35 DIN6921	M6x35 DIN6921 screw	4	-
4		Tornillo M6x45 DIN6921	M6x45 DIN6921 screw	2	-
5		Tornillo M6x50 DIN6921	M6x50 DIN6921 screw	2	-

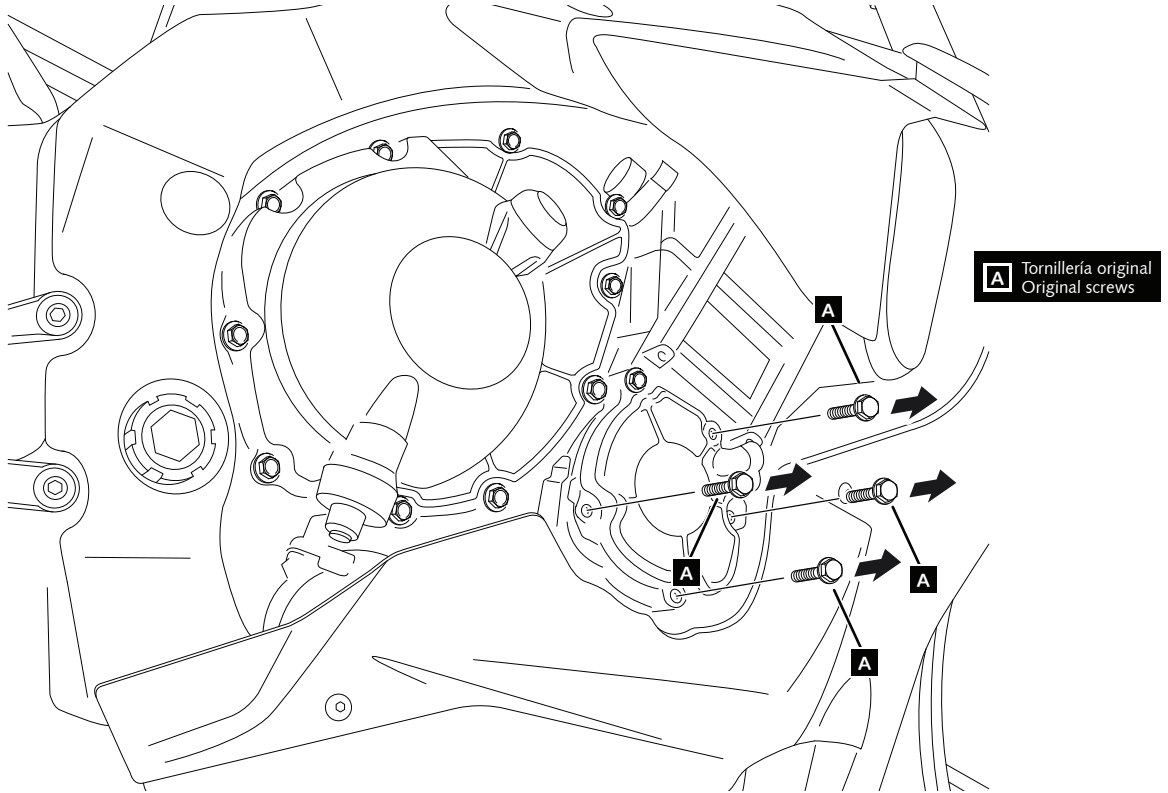
# YAMAHA YZF R1 '15-

REF 20127N

INSTRUCCIONES DE MONTAJE - MOUNTING INSTRUCTIONS - MONTAGEANLEITUNG

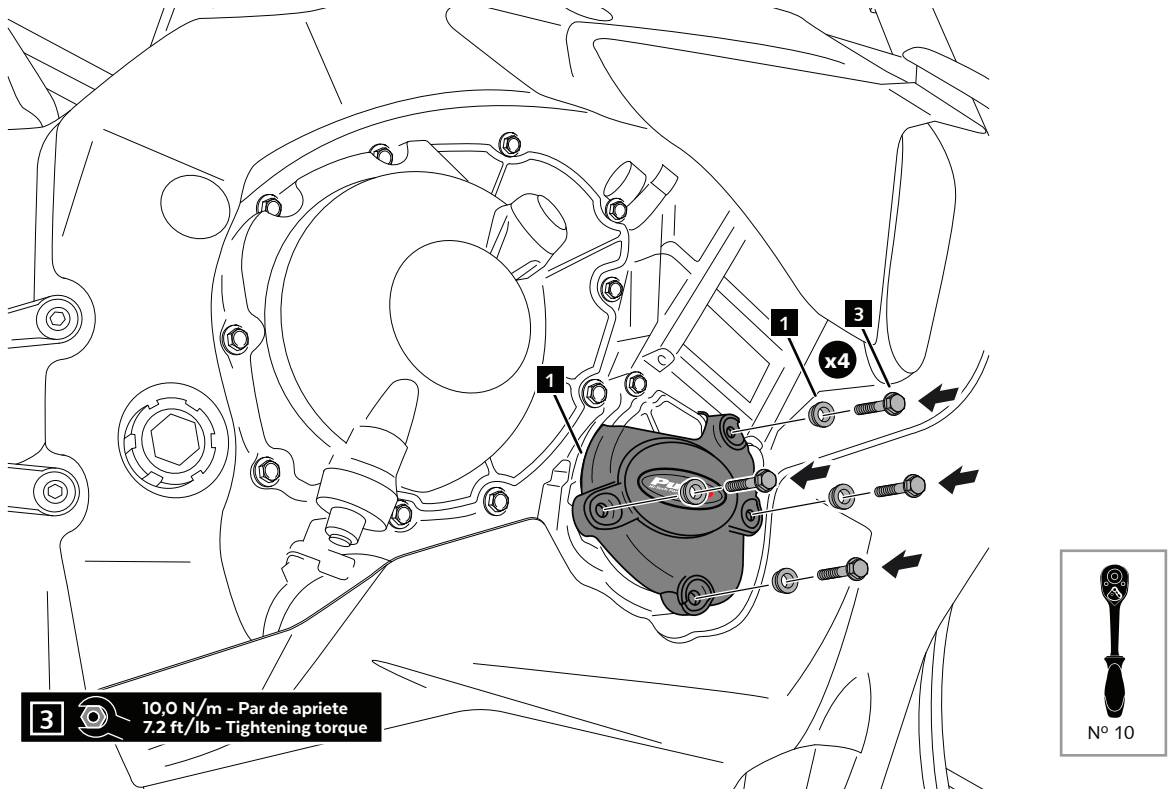
**1**

**DISASSEMBLY  
DESMONTAJE**



**2**

**ASSEMBLY  
MONTAJE**



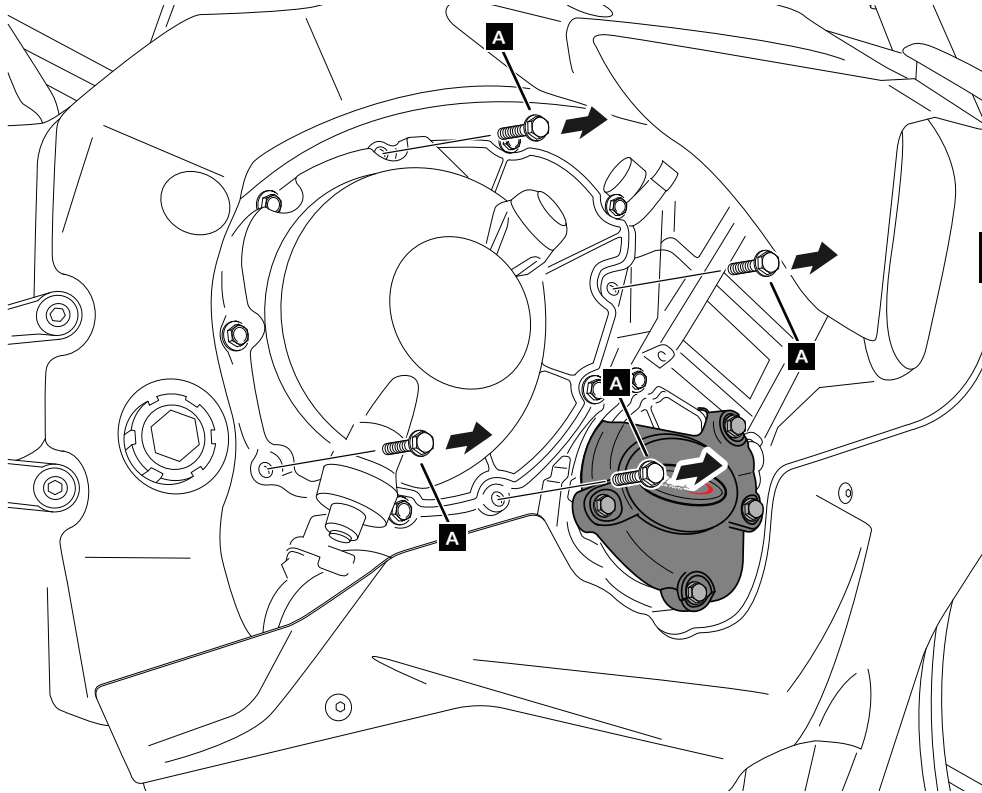
# YAMAHA YZF R1 '15-

REF 20127N

INSTRUCCIONES DE MONTAJE - MOUNTING INSTRUCTIONS - MONTAGEANLEITUNG

**3**

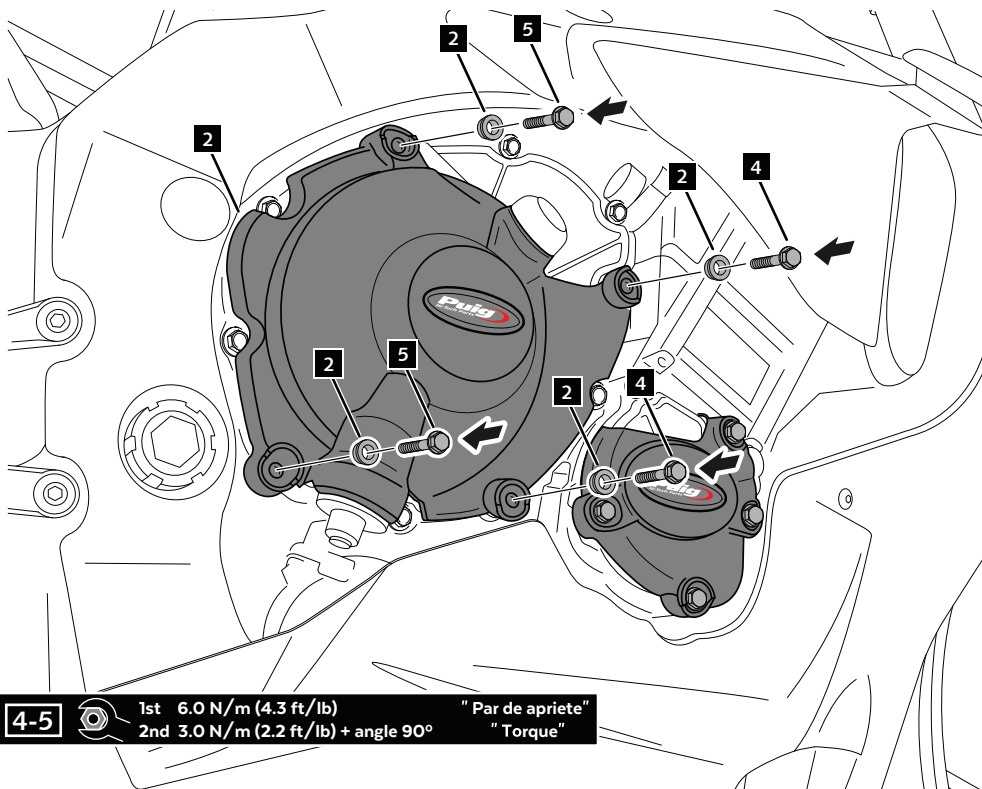
DISASSEMBLY  
DESMONTAJE



**A** Tornillería original  
Original screws

**4**

ASSEMBLY  
MONTAJE



**4-5** 1st 6.0 N/m (4.3 ft/lb) "Par de apriete"  
2nd 3.0 N/m (2.2 ft/lb) + angle 90° "Torque"

